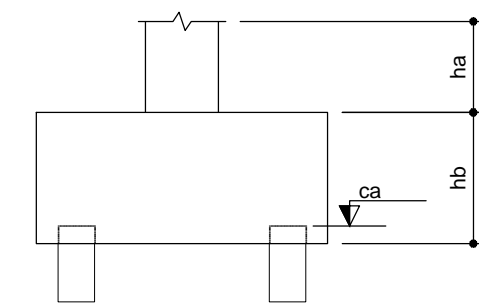


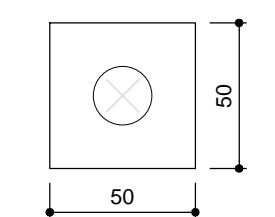
1 PLANTA DE LOCAÇÃO
ESCALA 1/50

Nome	Seção (cm)	X (cm)	Y (cm)	Pilar	Carga Máx. (kgf)	Carga Min. (kgf)	Fundação		h1 / hb (cm)	ne	Bloco	
							Lado B (cm)	Lado H (cm)			Estaca	ca (cm)
P1	13x30	6.50	613.05	13x30 cm ha = 0 cm hb = 50 cm 1xC20	4500	4300	50	50	0	50	1	C20 -19
P2	13x30	336.50	613.05	13x30 cm ha = 0 cm hb = 50 cm 1xC20	7200	6700	50	50	0	50	1	C20 -19
P3	13x30	666.50	613.05	13x30 cm ha = 0 cm hb = 50 cm 1xC20	7000	6600	50	50	0	50	1	C20 -19
P4	13x30	1046.50	613.05	13x30 cm ha = 0 cm hb = 50 cm 1xC20	7000	6600	50	50	0	50	1	C20 -19
P5	13x30	1566.50	613.05	13x30 cm ha = 0 cm hb = 45 cm 2xC20	4100	3900	110	50	0	45	2	C20 -14
P6	13x30	1055.00	406.55	13x30 cm ha = 0 cm hb = 45 cm 2xC20	6200	5600	110	50	0	45	2	C20 -14
P7	13x30	1558.00	406.55	13x30 cm ha = 0 cm hb = 45 cm 2xC20	5300	4900	110	50	0	45	2	C20 -14
P8	13x30	6.50	170.05	13x30 cm ha = 0 cm hb = 50 cm 1xC20	5700	5300	50	50	0	50	1	C20 -19
P9	13x30	336.50	170.05	13x30 cm ha = 0 cm hb = 50 cm 1xC20	7800	7200	50	50	0	50	1	C20 -19
P10	13x30	666.50	170.05	13x30 cm ha = 0 cm hb = 50 cm 1xC20	7600	7000	50	50	0	50	1	C20 -19
P11	13x30	1046.50	170.05	13x30 cm ha = 0 cm hb = 50 cm 1xC20	8900	8300	50	50	0	50	1	C20 -19
P12	13x30	1566.50	170.05	13x30 cm ha = 0 cm hb = 45 cm 2xC20	5400	5100	110	50	0	45	2	C20 -14
P13	20x20	10.00	10.00	20x20 cm ha = 0 cm hb = 45 cm 1xC20	2300	2200	50	50	0	45	1	C20 -14
P14	20x20	526.20	10.00	20x20 cm ha = 0 cm hb = 45 cm 1xC20	4400	4100	50	50	0	45	1	C20 -14
P15	20x20	1046.50	10.13	20x20 cm ha = 0 cm hb = 45 cm 1xC20	4900	4600	50	50	0	45	1	C20 -14
P16	20x20	1563.00	9.40	20x20 cm ha = 0 cm hb = 45 cm 1xC20	2700	2600	50	50	0	45	1	C20 -14

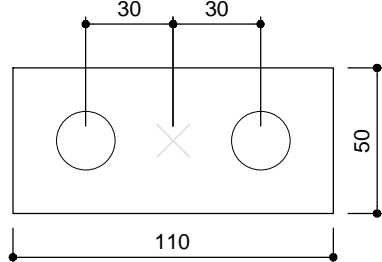
Estacas	
Nome	Quantidade
C20	20



B1=B2=B3=B4=B8=B9
B10=B11=B13=B14
B15=B16 (1xC20)

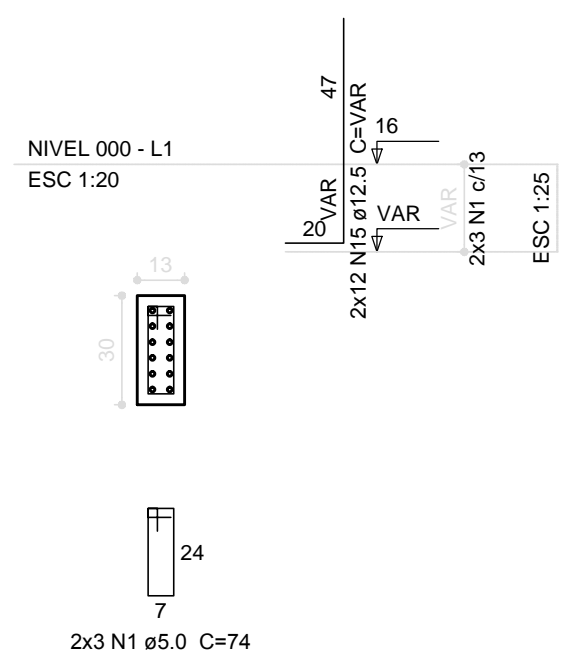


B5=B6=B7=B12 (2xC20)

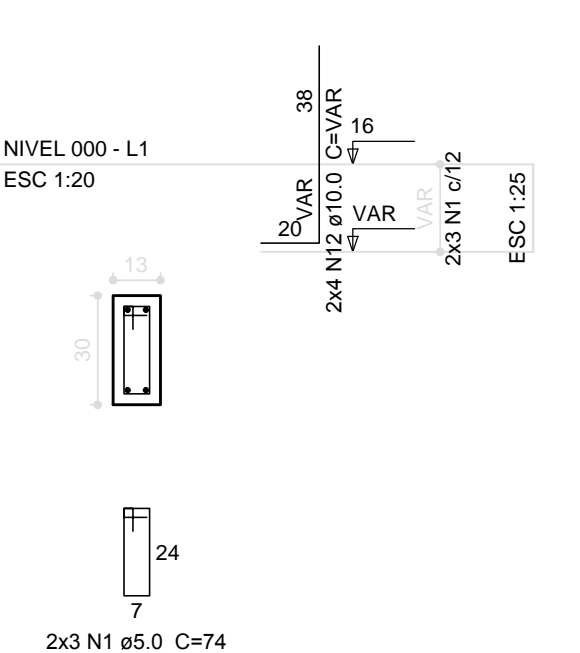


2 LEGENDA DOS BLOCOS
ESCALA 1/25

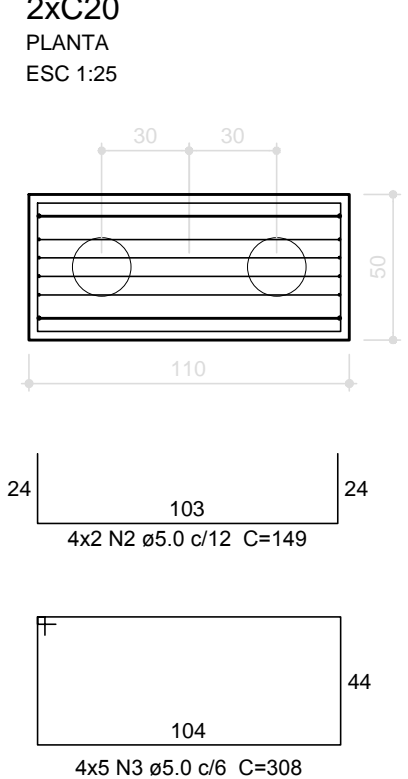
P5=P12



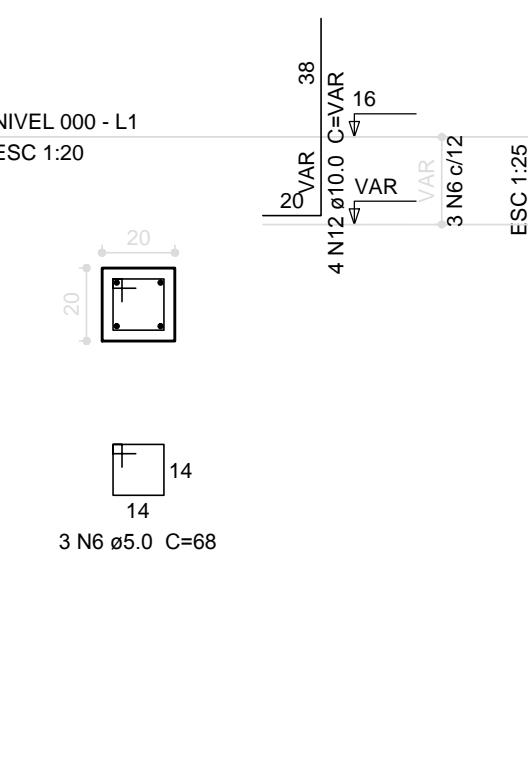
P6=P7



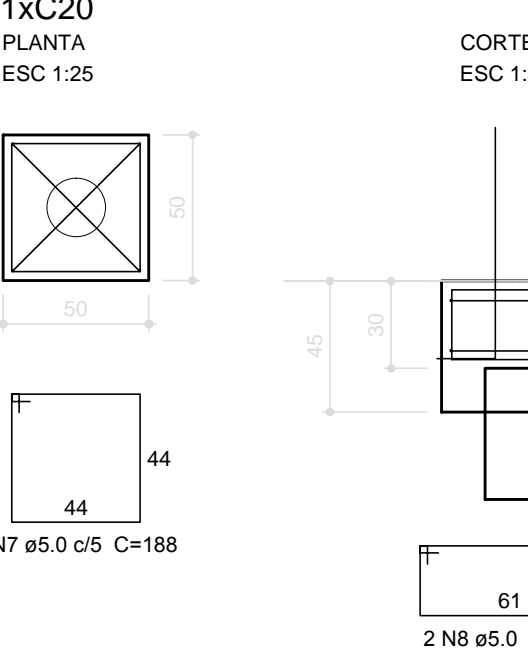
B5=B6=B7=B12



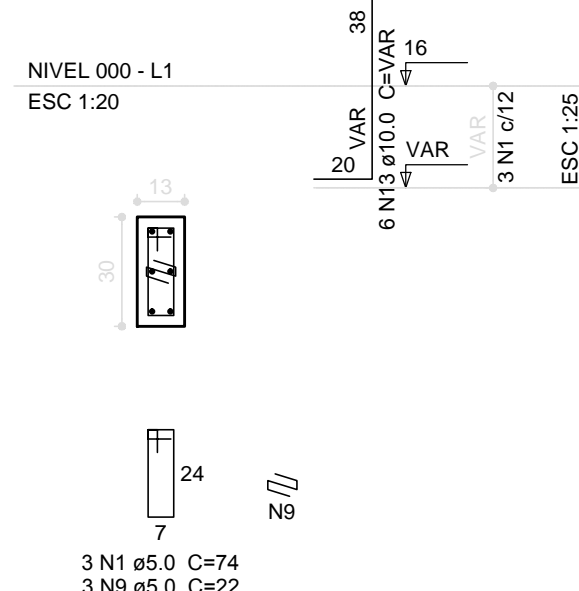
P13=P14
=P15=P16



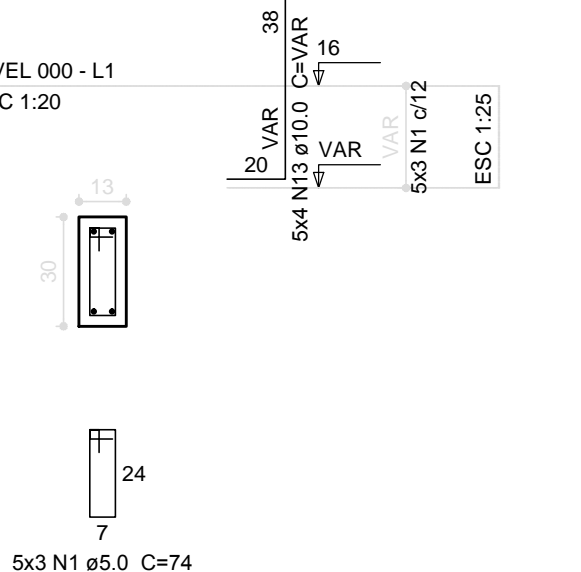
B13=B14
=B15=B16



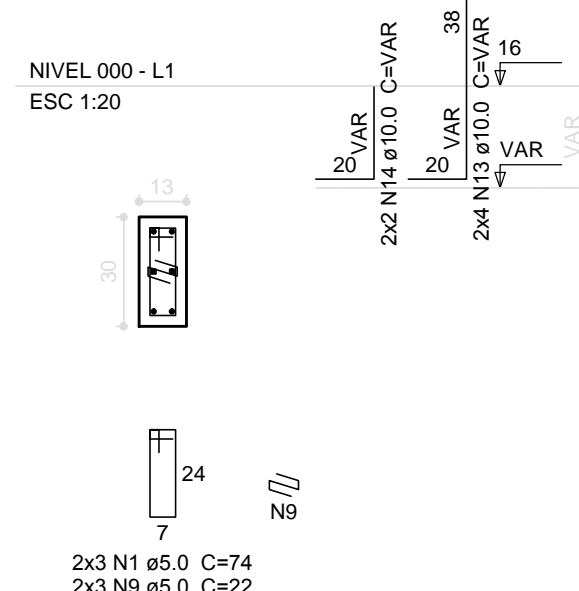
P3



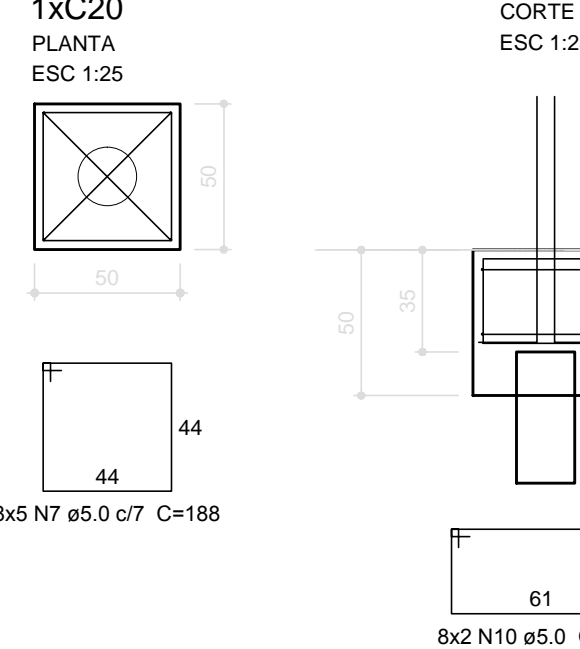
P1=P2=P8
=P9=P10



P4=P11



B1=B2=B3=B4
=B8=B9=B10=B11



3 BLOCOS DE FUNDAÇÃO
ESCALA: INDICADA

Relação do aço

AÇO	N	DIAM (mm)	C.TOTAL (m)	PESO + 10 % (kg)
CA60	1	5.0	36	74
	2	5.0	8	149
	3	5.0	20	308
	4	5.0	16	113
	5	5.0	20	146
	6	5.0	12	68
	7	5.0	60	188
	8	5.0	8	192
	9	5.0	9	22
	10	5.0	16	192
CA50	11	8.0	16	147
	12	10.0	24	VAR
	13	10.0	34	VAR
	14	10.0	4	VAR
	15	12.5	24	VAR

Resumo do aço

AÇO	DIAM (mm)	C.TOTAL (m)	PESO + 10 % (kg)
CA50	8.0	23.6	10.2
	10.0	53.6	36.3
	12.5	22.6	23.9
PESO TOTAL (kg)		315.7	53.5
CA50	70.5		
CA60	53.5		

Volume de concreto (C-25) = 2.55 m³
Área de forma = 21.76 m²

PROJETO PADRÃO - FNDE

MUNICÍPIO - UF:

PROPRIETÁRIO:

ENDEREÇO:

PROPRIETÁRIO

RESP. TÉCNICO CAU/ CREA

DLFO CAU/ CREA

RA

OBSERVAÇÕES:

ESCOLA 6 SALAS DE AULA

PROJETO DE ESTRUTURA

COORDENAÇÃO CGEST - Coordenação Geral de Infraestrutura Educativa	LOCAÇÃO DA OBRA BLOCOS DE FUNDAÇÃO (BLOCO DE SERVIÇO)		SFN
	REVISÃO R.02	ESCALA INDICADA DATA EMISSÃO FEVEREIRO/2014	PRANCHA 13/22