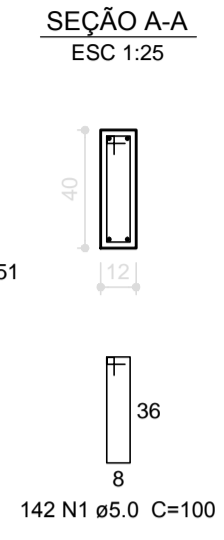
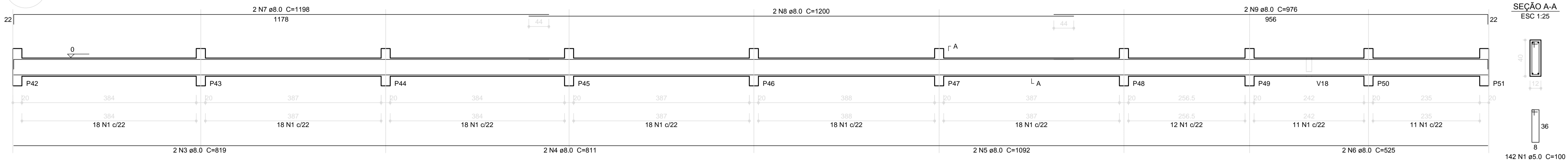
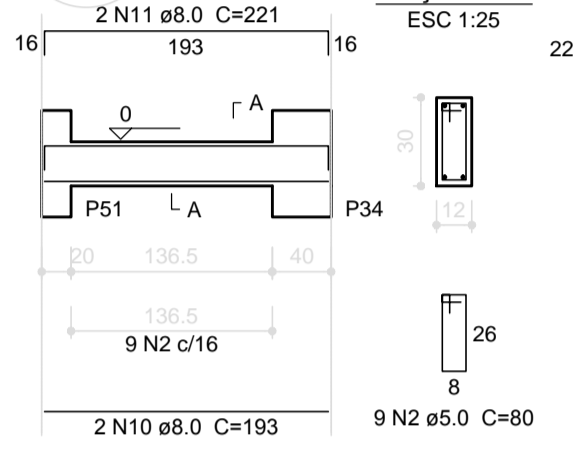


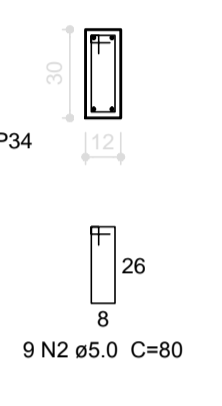
V5  
ESC 1:50



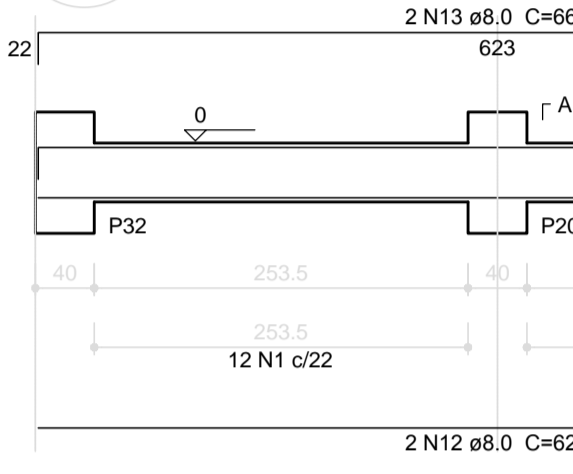
V19  
ESC 1:50



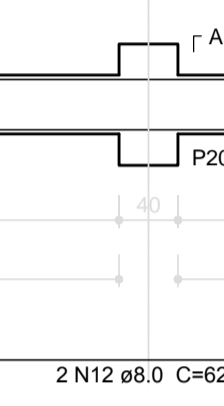
SEÇÃO A-A  
ESC 1:25



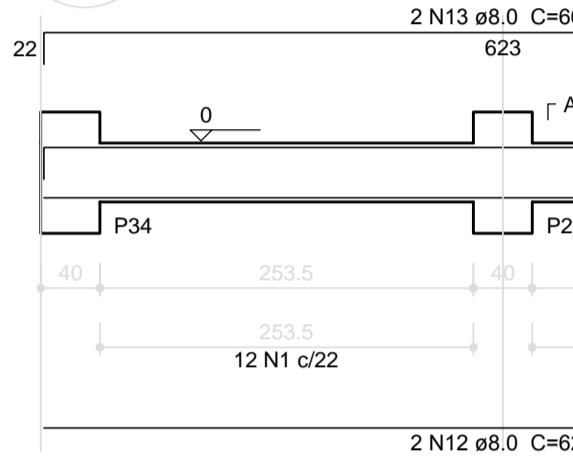
V17  
ESC 1:50



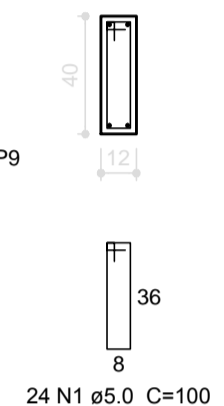
SEÇÃO A-A  
ESC 1:25



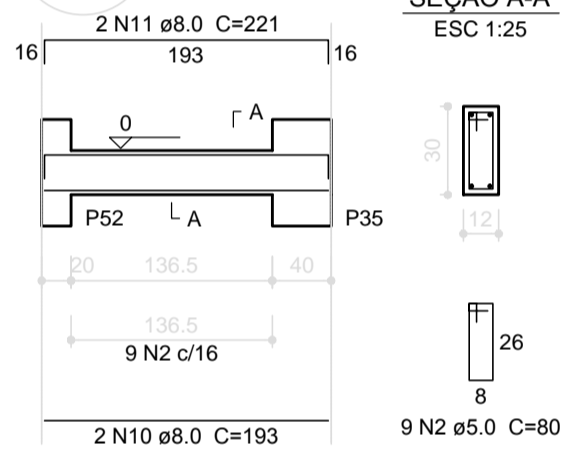
V20  
ESC 1:50



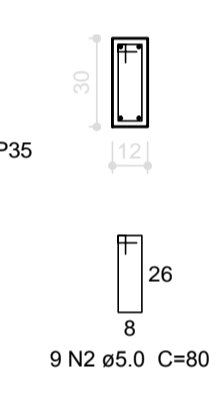
SEÇÃO A-A  
ESC 1:25



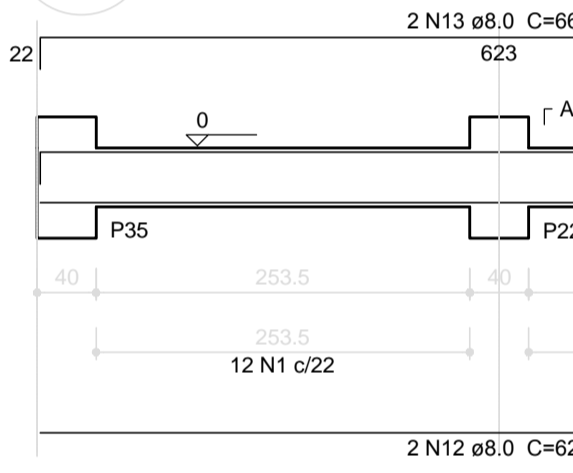
V21  
ESC 1:50



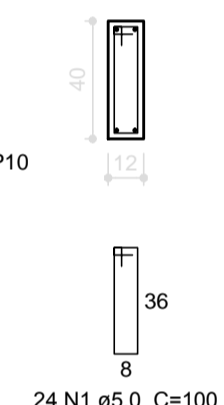
SEÇÃO A-A  
ESC 1:25



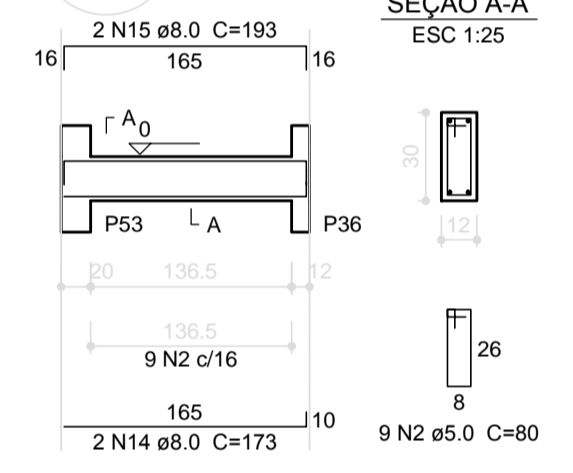
V22  
ESC 1:50



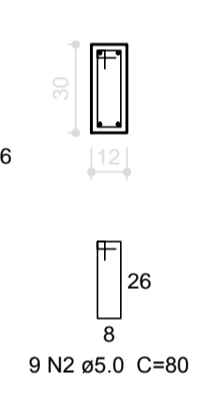
SEÇÃO A-A  
ESC 1:25



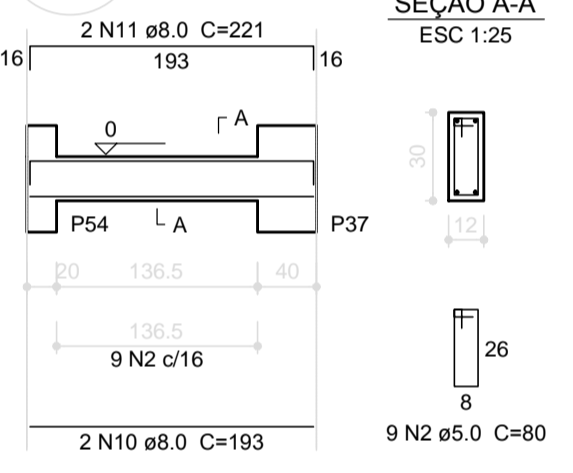
V23  
ESC 1:50



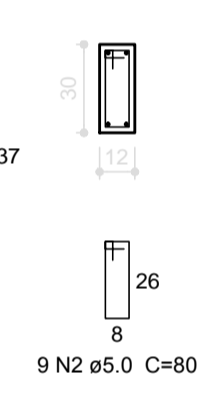
SEÇÃO A-A  
ESC 1:25



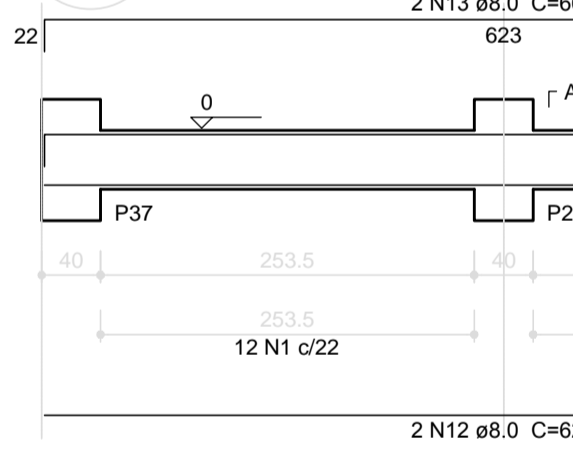
V24  
ESC 1:50



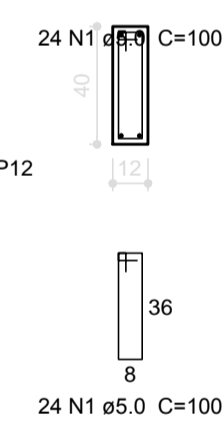
SEÇÃO A-A  
ESC 1:25



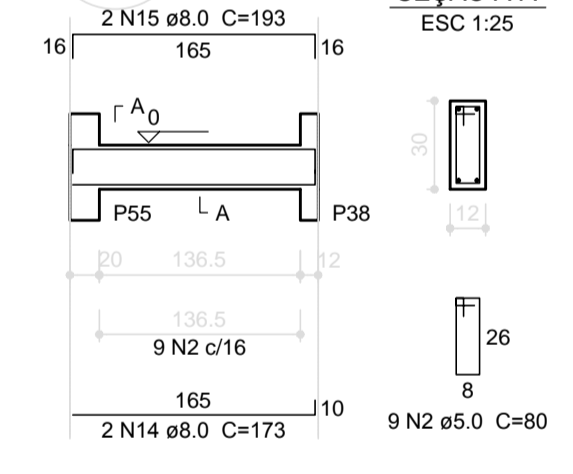
V25  
ESC 1:50



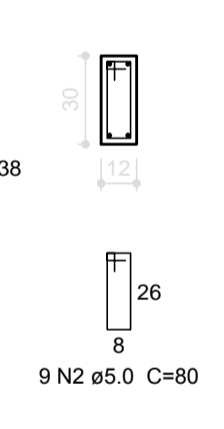
SEÇÃO A-A  
ESC 1:25



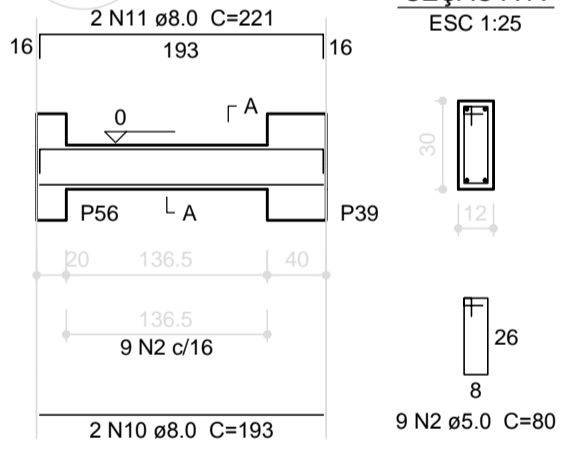
V26  
ESC 1:50



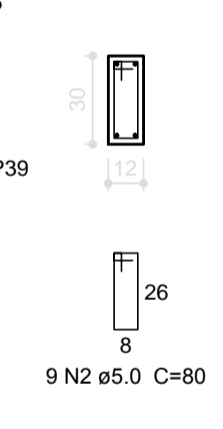
SEÇÃO A-A  
ESC 1:25



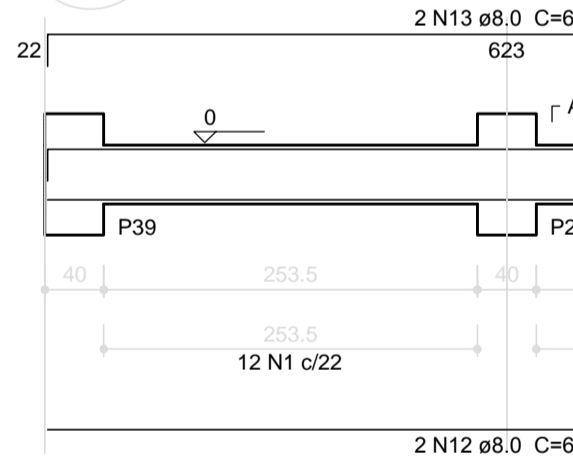
V27  
ESC 1:50



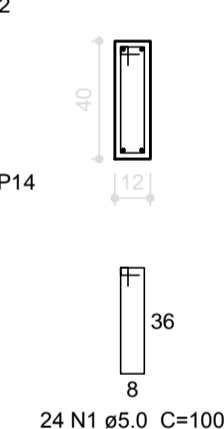
SEÇÃO A-A  
ESC 1:25



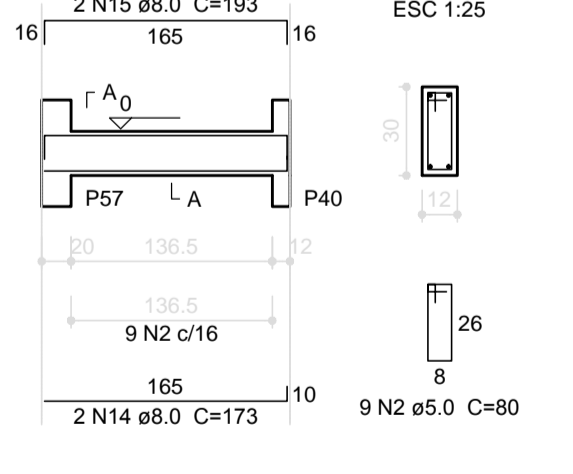
V28  
ESC 1:50



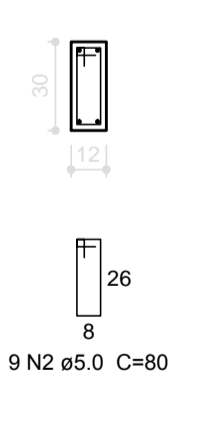
SEÇÃO A-A  
ESC 1:25



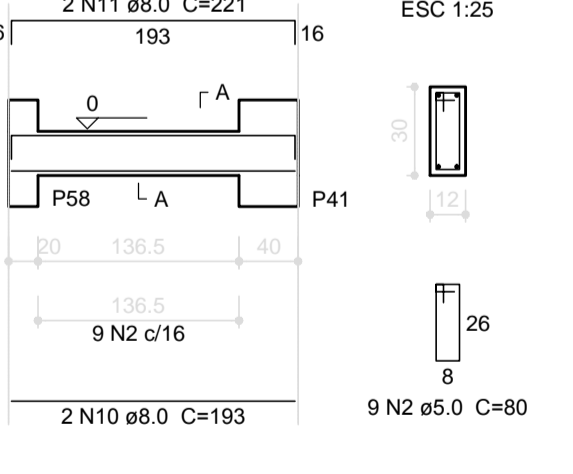
V29  
ESC 1:50



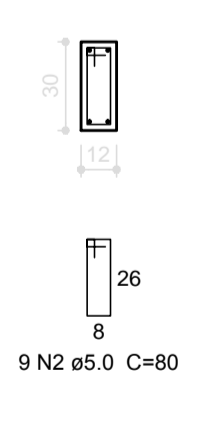
SEÇÃO A-A  
ESC 1:25



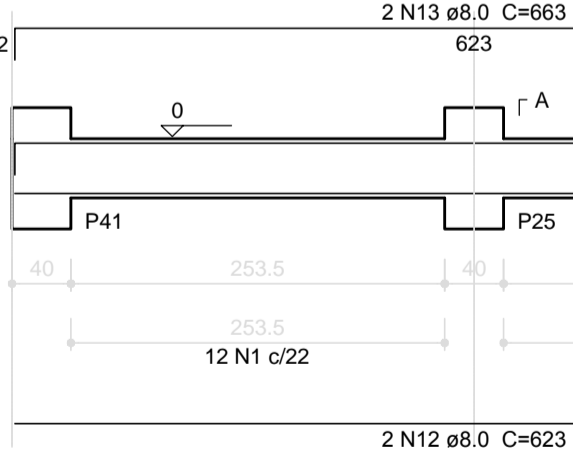
V30  
ESC 1:50



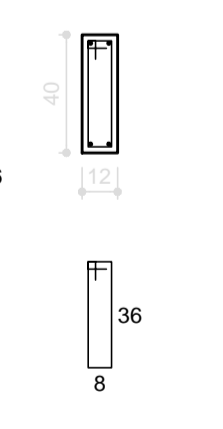
SEÇÃO A-A  
ESC 1:25



V31  
ESC 1:50



SEÇÃO A-A  
ESC 1:25



**Relação do aço**

AÇO	N	DIAM (mm)	QUANT (Barras)	UNIT (cm)	C.TOTAL (cm)
CA60	1	5.0	286	100	28600
	2	5.0	72	80	5760
CA50	3	8.0	2	819	1638
	4	8.0	2	811	1622
	5	8.0	2	1092	2184
	6	8.0	2	525	1050
	7	8.0	2	1198	2396
	8	8.0	2	1200	2400
	9	8.0	2	976	1952
	10	8.0	10	193	1930
	11	8.0	10	221	2210
	12	8.0	12	623	7476
	13	8.0	12	663	7956
	14	8.0	6	173	1038
	15	8.0	6	193	1158

**Resumo do aço**

AÇO	DIAM (mm)	C.TOTAL (m)	PESO + 10% (kg)
CA50	8.0	350.1	152
CA60	5.0	343.6	58.3
<b>PESO TOTAL (kg)</b>			
CA50		152	
CA60		58.3	

Volume de concreto (C-25) = 3.9 m³  
Área de forma = 75.23 m²

**1** VIGAS NÍVEL 000  
ESCALA: INDICADA

**FNDE** Fundo Nacional de Desenvolvimento da Educação

Ministério da Educação

GOVERNO FEDERAL  
**BRASIL**  
PAIS RICO E PAIS SEM POBREZA

## PROJETO PADRÃO - FNDE

MUNICÍPIO - UF: \_\_\_\_\_

PROPRIETÁRIO: \_\_\_\_\_

ENDEREÇO: \_\_\_\_\_

PROPRIETÁRIO: \_\_\_\_\_

RESP. TÉCNICO: \_\_\_\_\_ CAU/ CREA \_\_\_\_\_

DLFO	CAU/ CREA
	RA

OBSERVAÇÕES:

### ESCOLA 6 SALAS DE AULA

#### PROJETO DE ESTRUTURA

COORDENAÇÃO CGEST - Coordenação Geral de Infraestrutura Educacional	VIGAS NÍVEL 000 (BLOCO PEDAGÓGICO)	<b>SCV</b>
REVISÃO R.02	ESCALA INDICADA DATA EMISSÃO FEVEREIRO/2014	PRANCHA 04/22
FORMATO A1 (841x594)		