

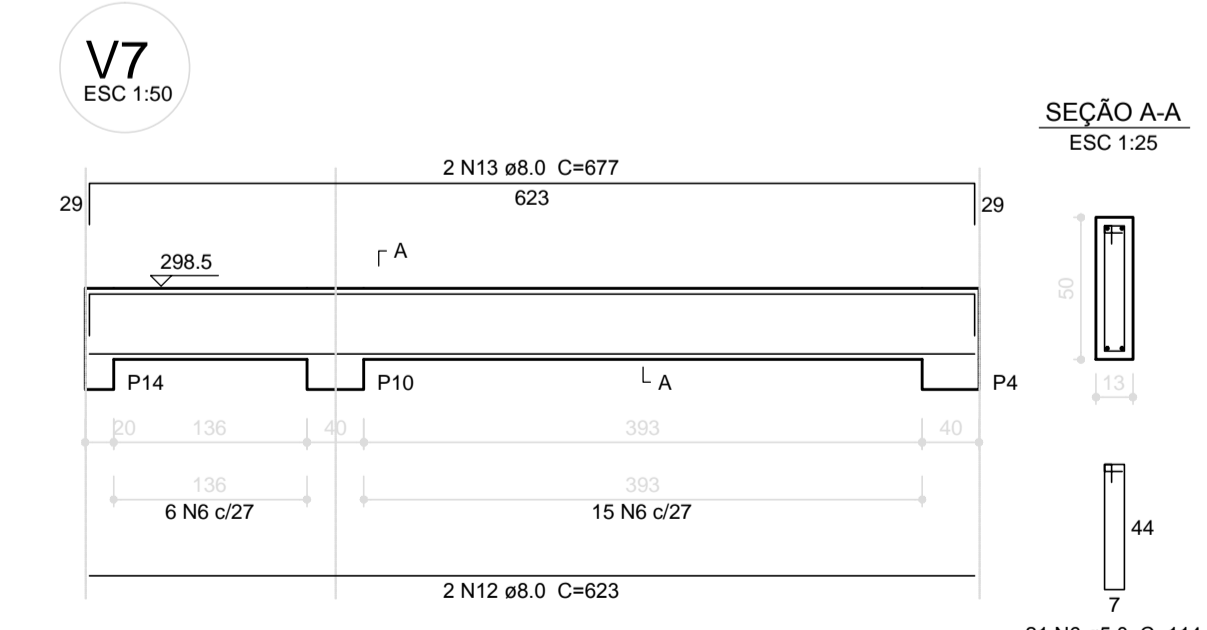
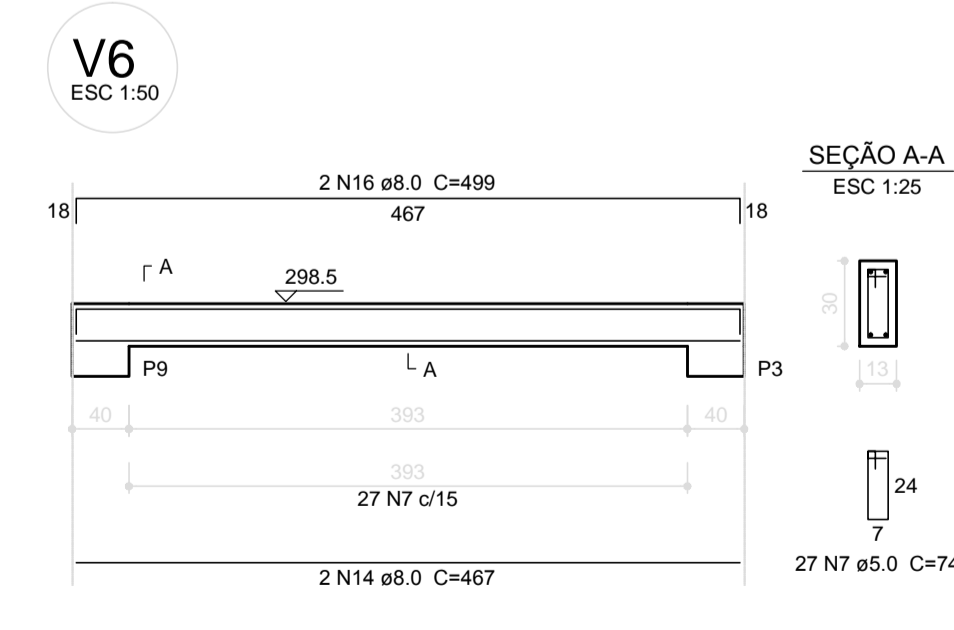
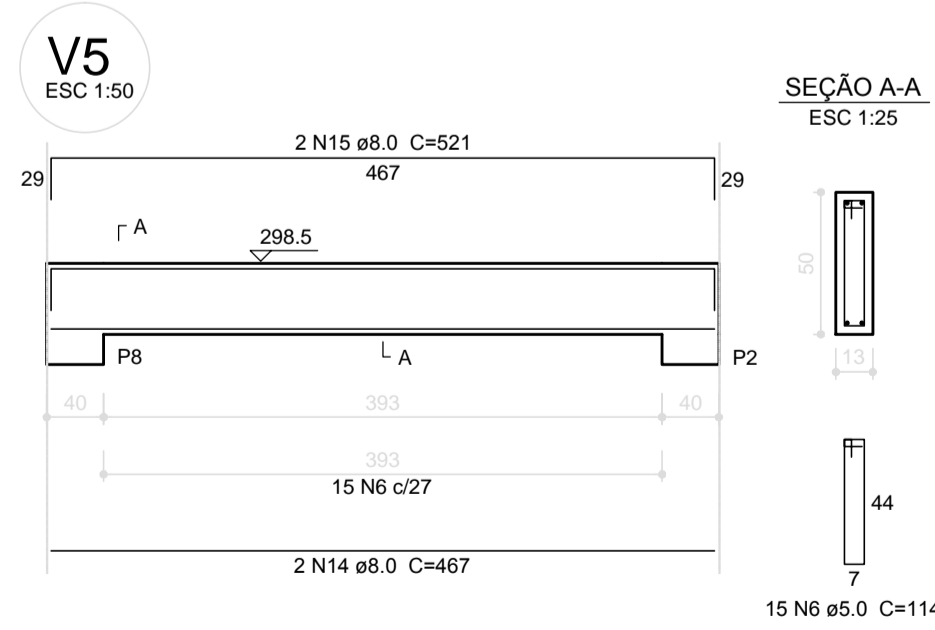
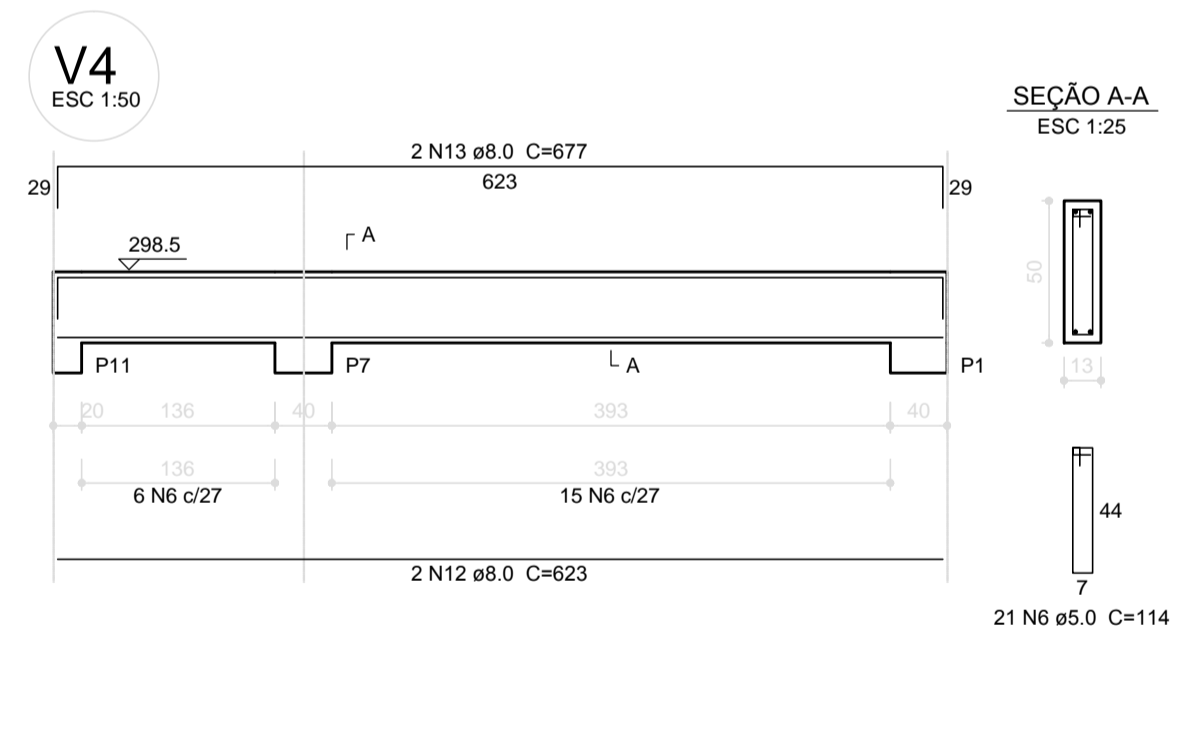
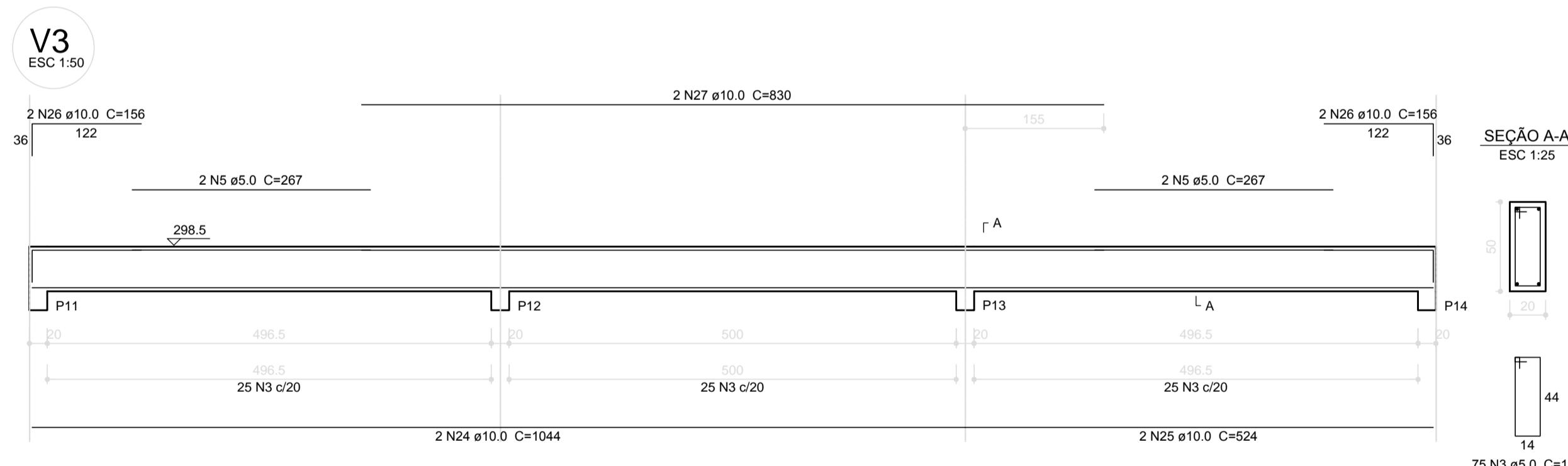
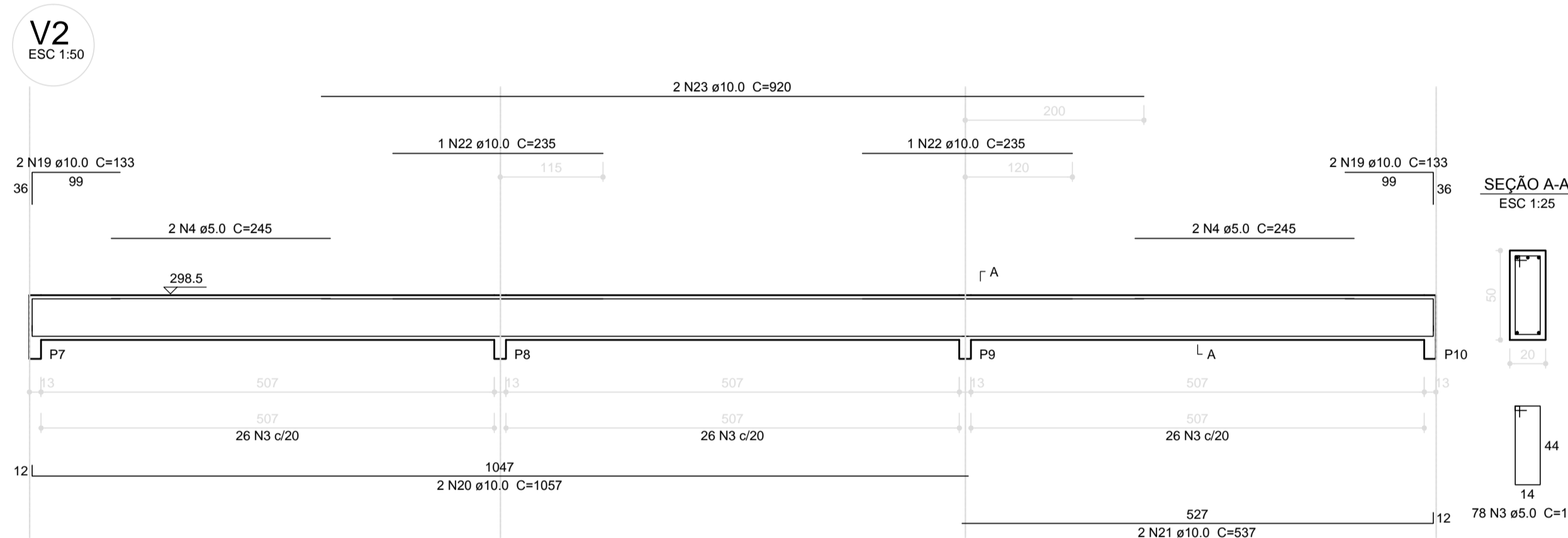
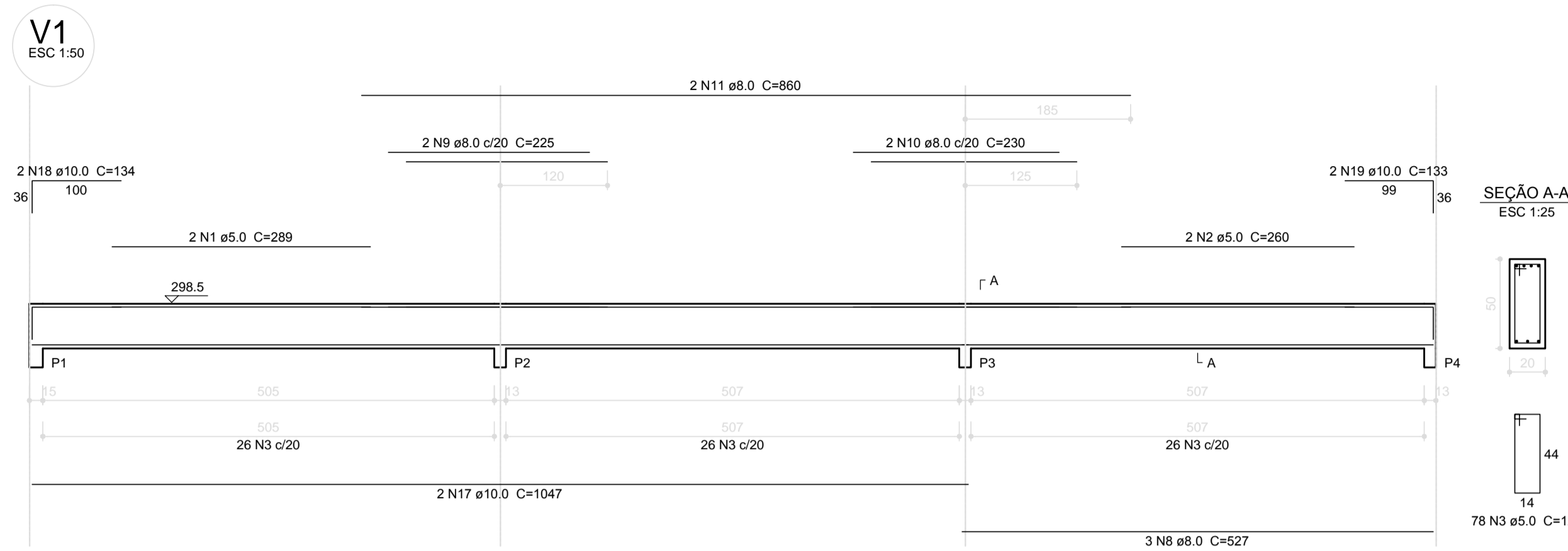
Relação do aço

AÇO	N	DIAM (mm)	QUANT (Barras)	UNIT (cm)	C.TOTAL (cm)	
						V1
CA60	1	5.0	2	289	578	
CA60	2	5.0	2	260	520	
CA60	3	5.0	231	128	29568	
CA60	4	5.0	4	245	980	
CA60	5	5.0	4	267	1068	
CA60	6	5.0	57	114	6498	
CA60	7	5.0	27	74	1998	
CA50	8	8.0	3	527	1581	
CA50	9	8.0	2	225	450	
CA50	10	8.0	2	230	460	
CA50	11	8.0	2	860	1720	
CA50	12	8.0	4	623	2492	
CA50	13	8.0	4	677	2708	
CA50	14	8.0	4	467	1868	
CA50	15	8.0	2	521	1042	
CA50	16	8.0	2	499	998	
CA50	17	10.0	2	1047	2094	
CA50	18	10.0	2	134	268	
CA50	19	10.0	6	133	798	
CA50	20	10.0	2	1057	2114	
CA50	21	10.0	2	537	1074	
CA50	22	10.0	2	235	470	
CA50	23	10.0	2	920	1840	
CA50	24	10.0	2	1044	2088	
CA50	25	10.0	2	524	1048	
CA50	26	10.0	4	156	624	
CA50	27	10.0	2	830	1660	




Resumo do aço

AÇO	DIAM (mm)	C.TOTAL (m)	PESO + 10 % (kg)
CA50	8.0	133.2	57.8
CA50	10.0	140.8	95.5
CA60	5.0	412.1	69.9
PESO TOTAL (kg)			
CA50		153.3	
CA60		69.9	

Volume de concreto (C-25) = 6.03 m³
 Área de forma = 79.64 m²



1 VIGAS NÍVEL 298.5
 ESCALA: INDICADA

PROJETO PADRÃO - FNDE

MUNICÍPIO - UF: _____

PROPRIETÁRIO: _____

ENDEREÇO: _____

PROPRIETÁRIO: _____

RESP. TÉCNICO: _____ CAU/ CREA _____

DLFO: _____ CAU/ CREA _____

RA: _____

OBSERVAÇÕES: _____

ESCOLA 6 SALAS DE AULA

PROJETO DE ESTRUTURA

COORDENAÇÃO CGEST - Coordenação Geral de Infraestrutura Educativa	VIGAS NÍVEL 298.5 (BLOCO ADMINISTRATIVO)	SCV
REVISÃO	ESCALA	PRANCHA
FORMATO A1 (841x594)	R.02	DATA EMISSÃO FEVEREIRO/2014
		11/22