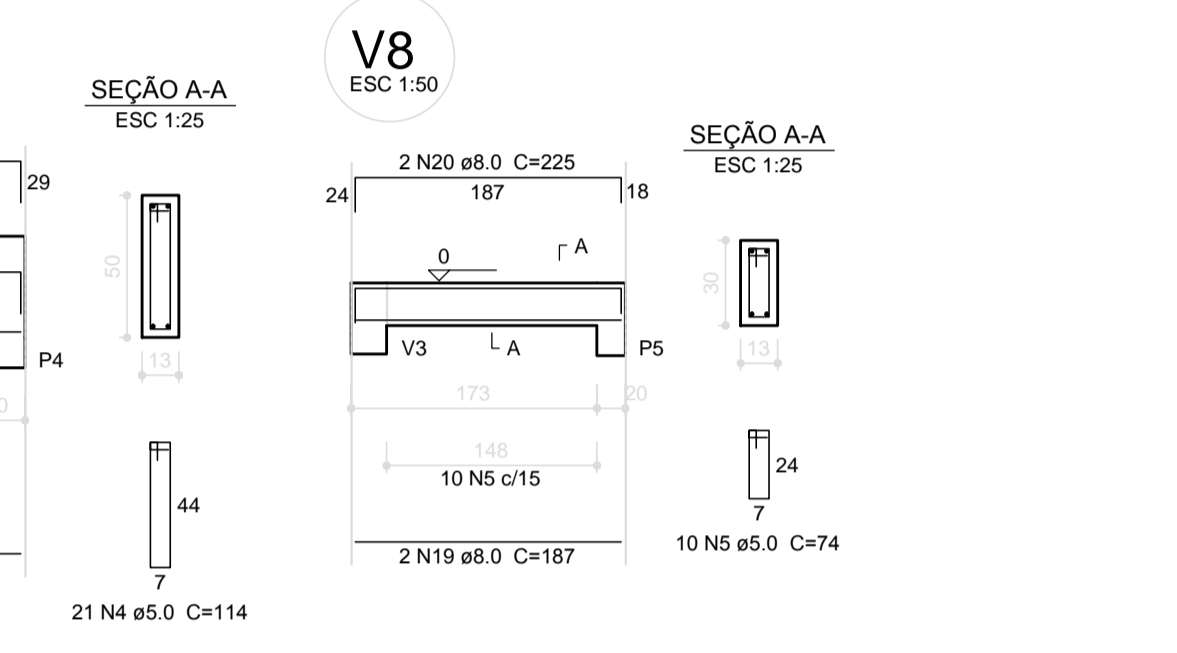
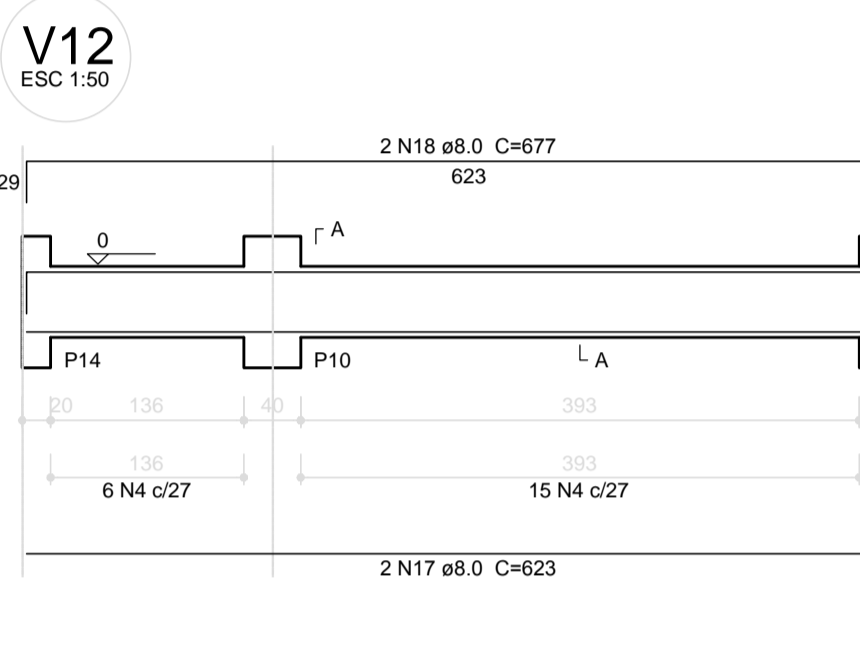
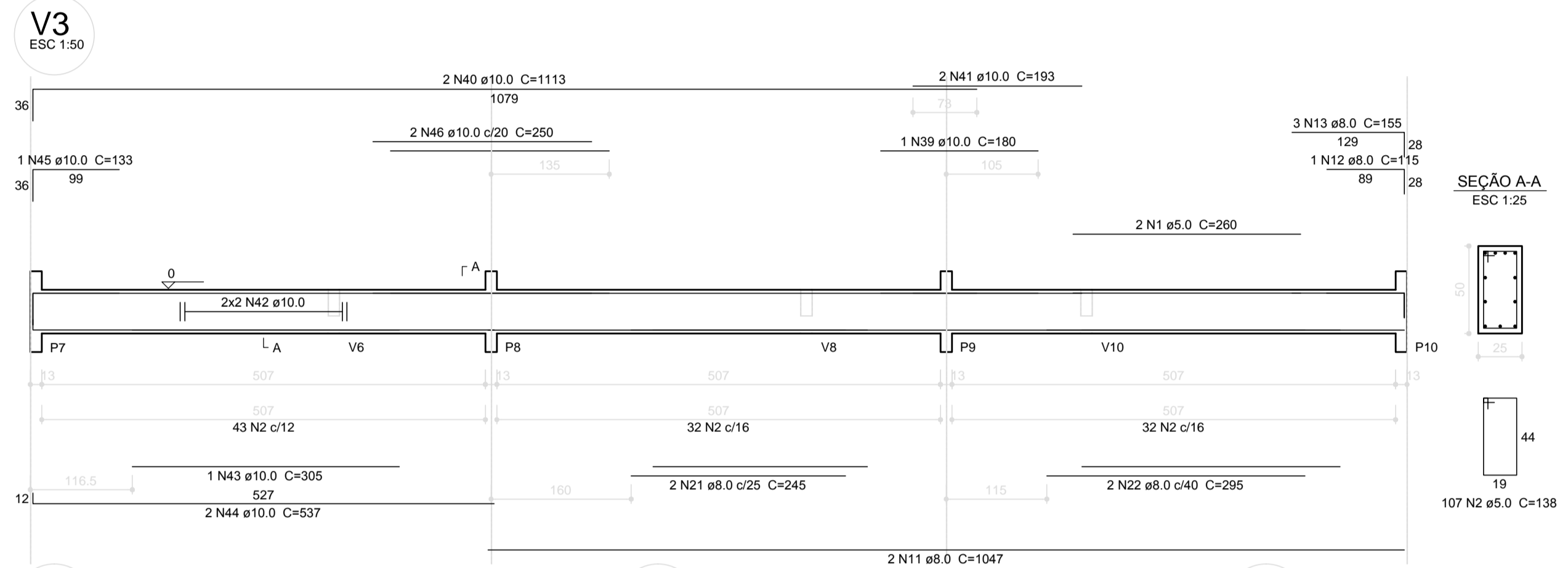


Relação do aço

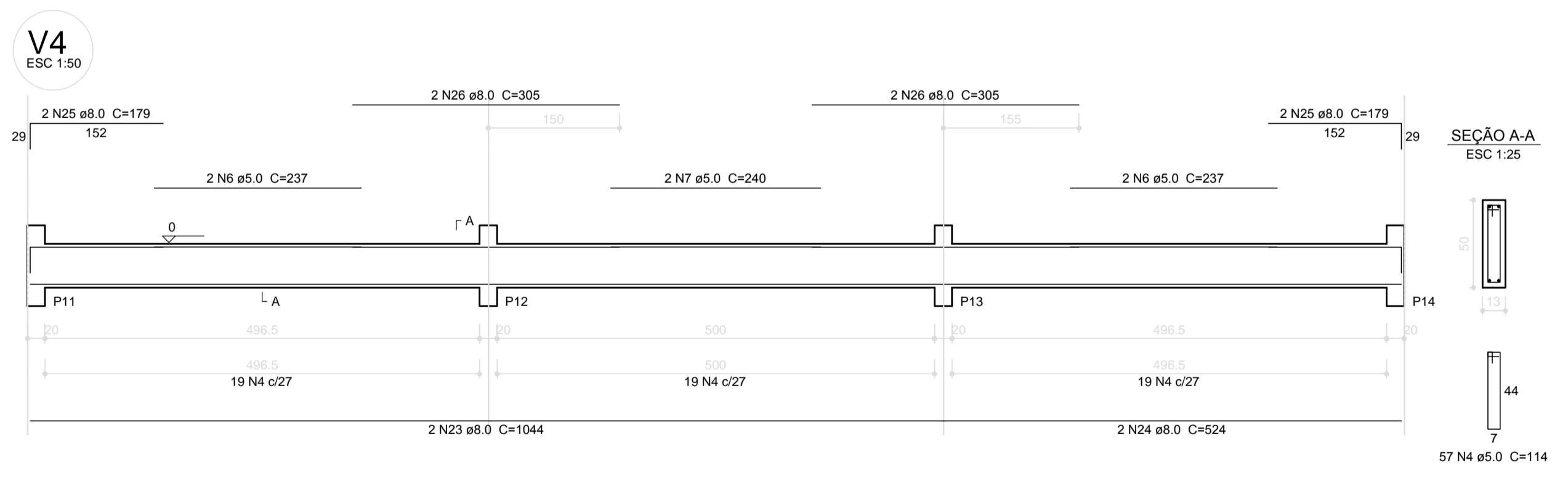
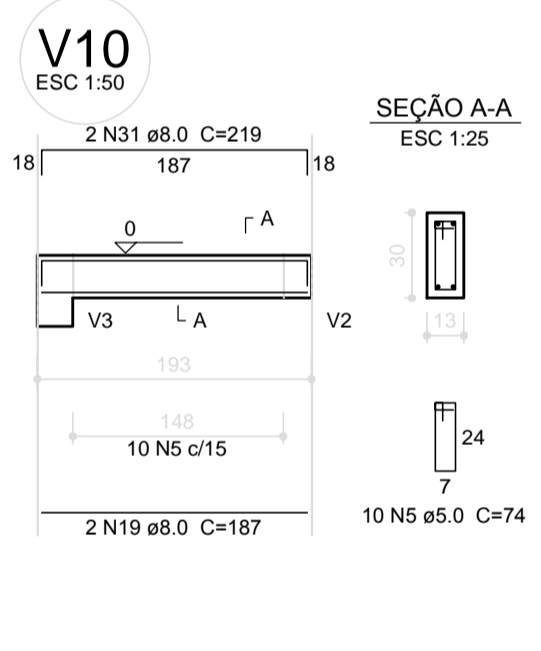
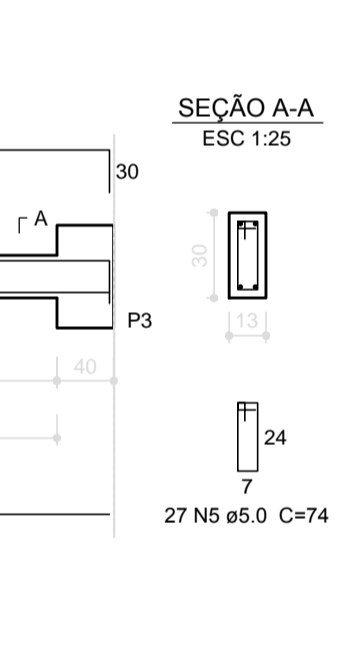
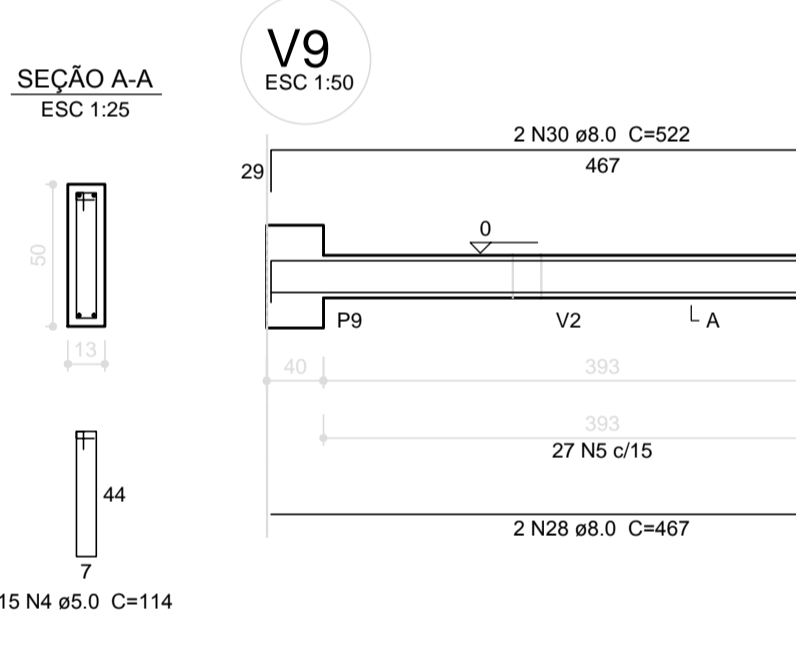
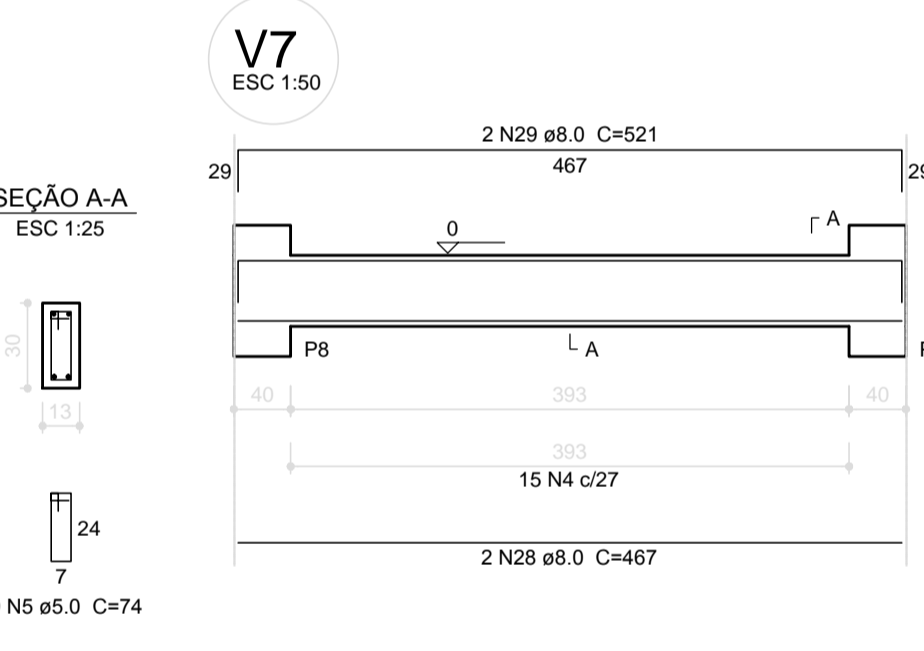
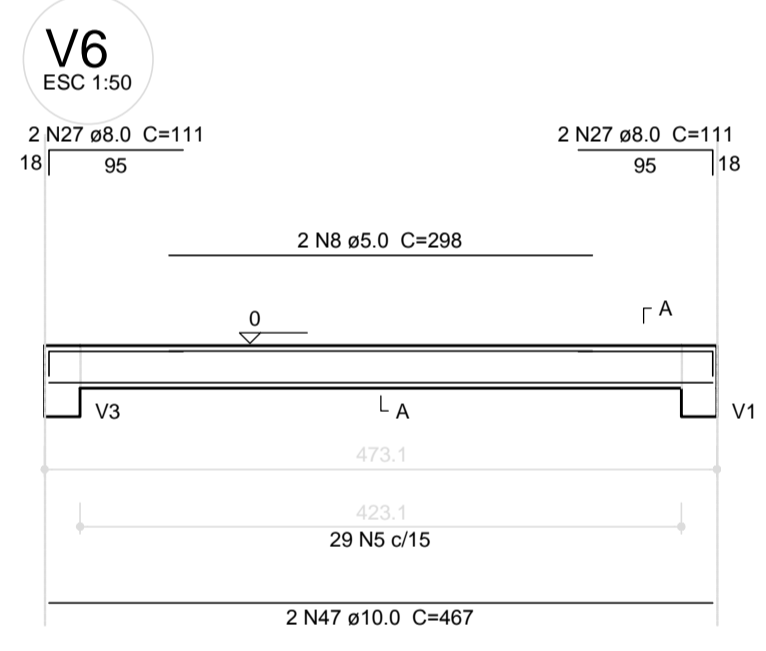
AÇO	N	DIAM (mm)	QUANT (Barras)	UNIT (cm)	C.TOTAL (cm)
CA60	1	5.0	4	260	1040
	2	5.0	214	138	29532
	3	5.0	24	88	2112
	4	5.0	114	114	12996
	5	5.0	93	74	6882
	6	5.0	4	237	948
	7	5.0	2	240	480
	8	5.0	2	298	596
CA50	9	8.0	2	200	400
	10	8.0	2	290	580
	11	8.0	4	1047	4188
	12	8.0	2	115	230
	13	8.0	6	155	930
	14	8.0	2	387	774
	15	8.0	1	101	101
	16	8.0	2	432	864
	17	8.0	4	623	2492
	18	8.0	4	677	2708
	19	8.0	4	187	748
	20	8.0	2	225	450
	21	8.0	2	245	490
	22	8.0	2	295	590
	23	8.0	2	1044	2088
	24	8.0	2	524	1048
	25	8.0	4	179	716
	26	8.0	4	305	1220
	27	8.0	4	111	444
	28	8.0	4	467	1868
	29	8.0	2	521	1042
	30	8.0	2	522	1044
	31	8.0	2	219	438
	32	8.0	2	294	588
	33	8.0	2	331	662
	34	10.0	4	CORR	2020
	35	10.0	1	299	299
	36	10.0	2	527	1054
	37	10.0	1	134	134
	38	10.0	2	240	480
	39	10.0	2	180	360
	40	10.0	4	1113	4452
	41	10.0	4	193	772
	42	10.0	4	CORR	2028
	43	10.0	1	305	305
	44	10.0	2	537	1074
	45	10.0	1	133	133
	46	10.0	2	250	500
	47	10.0	2	467	934



Resumo do aço

AÇO	DIAM (mm)	C.TOTAL (m)	PESO + 10% (kg)
CA50	8.0	267.1	115.9
CA60	5.0	545.9	96.6
PESO TOTAL (kg)			212.5
CA50		214.5	
CA60		92.5	

Volume de concreto (C-25) = 6.95 m³
Área de forma = 91.72 m²



1 VIGAS NÍVEL 000
ESCALA: INDICADA

PROJETO PADRÃO - FNDE

MUNICÍPIO - UF:
PROPRIETÁRIO:
ENDEREÇO:

PROPRIETÁRIO:
RESP. TÉCNICO: CAU/ CREA

DLFO: CAU/ CREA
RA

OBSERVAÇÕES:

ESCOLA 6 SALAS DE AULA
PROJETO DE ESTRUTURA

COORDENAÇÃO CGEST - Coordenação Geral de Infraestrutura Educacional	VIGAS NÍVEL 000 (BLOCO ADMINISTRATIVO)	SCV
REVISÃO	ESCALA INDICADA	PRANCHA
FORMATO A1 (841x594)	R.02 DATA EMISSÃO FEVEREIRO/2014	10/22